



Reservation / Online Ordering:  
[WWW.LITTLE-B.COM.AU](http://WWW.LITTLE-B.COM.AU)

PHONE  
**04 5066 7629**

  [littlebperth](https://www.instagram.com/littlebperth)

Byo  
dine-in  
takeaway

**7  
DAYS**

- Note:
- The images are for advertising purpose only.
  - Kitchen close one hour before restaurant closed.
  - 10% Surcharge on Sunday
  - 15% Surcharge on Public Holiday
  - 1% charge on all cards payment
  - No food and drinks allowed from outside.



Bangkok Dining

# BEVERAGE

## WHITE WINE

	GLASS / BOTTLE
HOUSE WHITE SAUVIGNON BLANC.....	7/25
YALUMBA PINOT GRIGIO, SA.....	8/29
VILLA MARIA SAUVIGNON BLANC, MARLBOROUGH, NZ.....	9/32

## SWEET WINE

	GLASS / BOTTLE
BROWN BROTHERS MOSCATO, VICTORIA.....	8/30

## RED WINE

	GLASS / BOTTLE
HOUSE RED SHIRAZ.....	7/25
LOVERS NOT TOREADORS TEMPRANILLO, SPAIN.....	8/29
MADFISH "GOLD TURTLE" CABERNET MERLOT, MARGARET RIVER.....	29

## BEER

	BOTTLE
SINGHA THAILAND.....	8
ASAHI JAPAN.....	8
CORONA MEXICO.....	8
TIGER SINGAPORE.....	8
PERONI ITALY.....	8
LITTLE CREATURE PALE ALE AUSTRALIA.....	8

## WATER

STILL WATER 600ML.....	4.0
NATURAL MINERAL WATER 300ML.....	4.5
VOSS SPARKLING WATER.....	6.5

## SOFT DRINK

PEPSI 600ML.....	5.5
PEPSI MAX 600ML.....	5.5
LEMONADE 600ML.....	5.5
SOLO 600ML.....	5.5
SUNKIST 600ML.....	5.5
LEMON LIME BITTER 300ML.....	4.5
GINGER ALE 300ML.....	4.5
AGRUM BLOOD ORANGE 300ML.....	4.5
LEMON & LIME 300ML.....	4.5
ORANGE & MANGO 300ML.....	4.5

## JUICE

APPLE JUICE 300ML.....	5
ORANGE JUICE 300ML.....	5
COCONUT JUICE.....	6

## ICED TEA

THAI MILK TEA (RECOMMENDED).....	5
THAI BLACK COFFEE.....	5
ICE TEA - LEMON 500ML.....	5
ICE TEA - PEACH 500ML.....	5

## HOT TEA

	MUG / POT
GREEN TEA.....	4/6
JASMINE TEA.....	4/6

BYO \$3.5 PER PERSON



Bangkok Dining

# TO START

**D** CONTAIN DAIRY

**G** GLUTEN FREE

**N** CONTAIN NUT

**V** VEGETARIAN

MILD SPICY

VEGAN

**SPRING ROLL**  
\$10.9

**V**



**WING ZAAP**  
\$10.9



**CURRY PUFF**  
\$10.9

**V**

**D**



**SHRIMP, CRAB NET SPRING ROLL**  
\$10.9



**DEEP FRIED TOFU**  
\$9.9

**V**



**SATAY CHICKEN STICK**  
\$11.9

**N**





Bangkok Dining

# TO START

**D** CONTAIN DAIRY **G** GLUTEN FREE

**N** CONTAIN NUT **V** VEGETARIAN

MILD

SPICY

**FISH CAKE**  
\$10.9



**LOOK CHIN PING**  
(CHICKEN BALLS)  
\$10.9



**PRAWN CRACKER**  
\$5.9



**GRILLED FISH BALL**  
\$10.9



**KANOM JEEB**  
\$12.9



**CHICKEN WINGS IN RED SAUCE**  
\$11.9



**CRISPY PRAWN IN A BLANKET**  
\$14.9





Bangkok Dining

# SOUP

**D** CONTAIN DAIRY **G** GLUTEN FREE

**N** CONTAIN NUT **V** VEGETARIAN

MILD

SPICY

**TOM YUM GOONG** **S: \$14.9**  
**PRAWN** **L: \$24.9**



**TOM KHA GAI** **S: \$14.9**  
**CHICKEN** **L: \$21.9**



# CURRY

PLEASE SELECT A CHOICE OF MEAT

- TOFU OR VEGETABLE \$19.9
- CHICKEN BREAST \$19.9
- BEEF \$20.9
- FISH FILLET OR SQUID \$20.9
- PRAWN OR SEAFOOD \$24.9

**MASSAMAN BEEF**  
**\$23.9**

**N**



**MASSAMAN CHICKEN**  
**\$20.9**



**GREEN CURRY**



**RED CURRY**



Bangkok Dining

# GRILL

- D CONTAIN DAIRY
- G GLUTEN FREE
- N CONTAIN NUT
- V VEGETARIAN
- MILD
- SPICY

### BBQ BEEF PAPAYA SALAD

\$21.9

N



### BBQ BEEF STICKY RICE

\$21.9



### BBQ PORK PAPAYA SALAD

\$21.9

N



### BBQ PORK STICKY RICE

\$21.9



### GRILLED CHICKEN PAPAYA SALAD

\$21.9

N



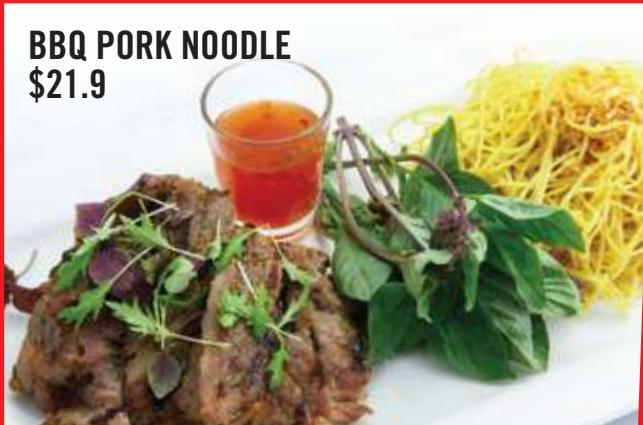
### GRILLED CHICKEN STICKY RICE

\$21.9



### BBQ PORK NOODLE

\$21.9



### BBQ BEEF NOODLE

\$21.9





# SALAD

**D** CONTAIN DAIRY   **G** GLUTEN FREE  
**N** CONTAIN NUT   **V** VEGETARIAN  
 MILD   SPICY

**BBQ BEEF SALAD**  
\$21.9



**BBQ PORK SALAD**  
\$21.9



**CRISPY CHICKEN SALAD**  
\$21.9



**N**



**GRILLED CHICKEN SALAD**  
\$21.9



**DUCK SALAD**  
\$24.9



**N**



**SOFT SHELL CRAB W/  
PAPAYA SALAD**  
\$26.9



**N**



**SOM TUM THAI**  
\$17.9



**N**



**THAI ANCHOVY AND SALTED CRAB**  
\$17.9





Bangkok Dining

# SPICY SALAD

- D CONTAIN DAIRY
- G GLUTEN FREE
- N CONTAIN NUT
- V VEGETARIAN
- MILD
- SPICY

**SPICY SALAD BEEF**   
\$21.9



**SPICY SALAD CRISPY CHICKEN**   
\$21.9



**SPICY SALAD PRAWN**   
\$24.9



**SPICY SALAD SEAFOOD**   
\$24.9



# SPECIAL THAI SALAD

**SOMTUM THAI W/  
CRISPY CHICKEN**   
\$21.9

N







Bangkok Dining

# WOK STIR FRY

- D CONTAIN DAIRY
- G GLUTEN FREE
- N CONTAIN NUT
- V VEGETARIAN
- MILD
- SPICY

## PLEASE SELECT A CHOICE OF MEAT



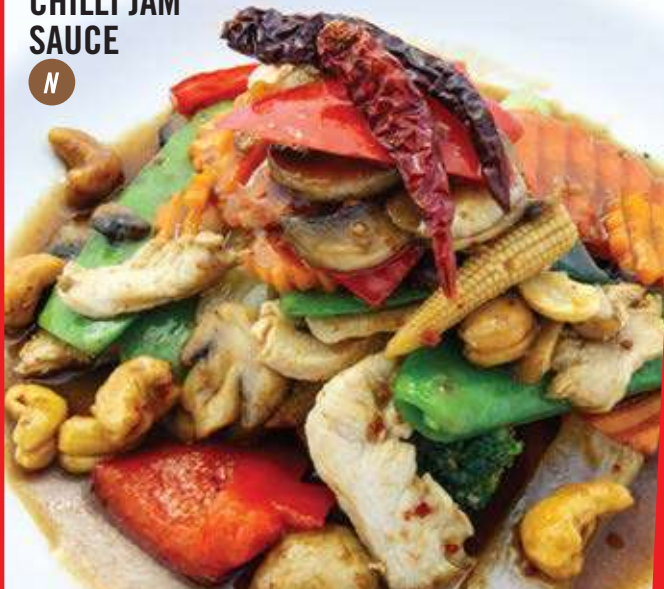
- TOFU OR VEGETABLE \$19.9
- CHICKEN BREAST \$19.9
- BEEF \$20.9
- FISH FILLET OR SQUID \$20.9
- GRILLED CHICKEN \$21.9
- CRISPY CHICKEN \$21.9
- PRAWN OR SEAFOOD \$24.9
- DUCK \$24.9

### CHILLI BASIL SAUCE



### CHILLI JAM SAUCE

N



### OYSTER SAUCE

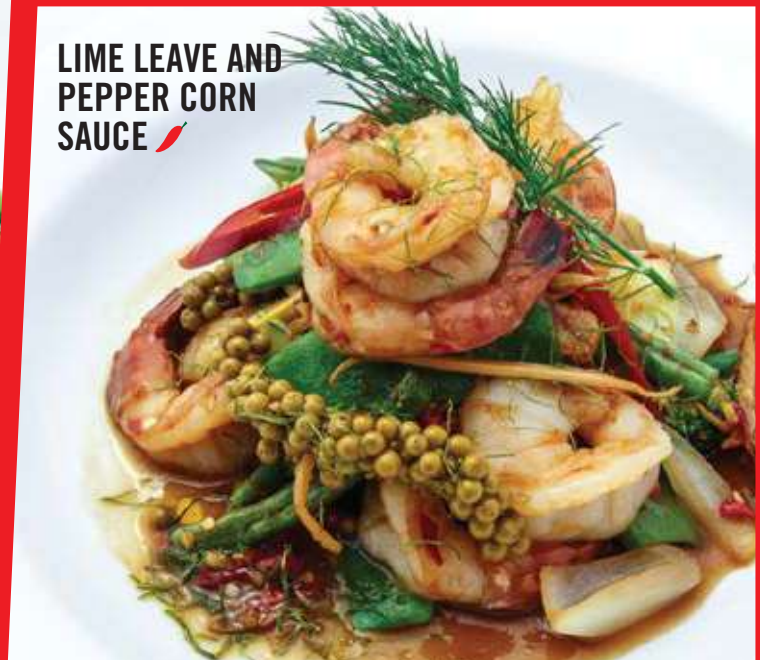


### SATAY SAUCE

N



### LIME LEAF AND PEPPER CORN SAUCE





Bangkok Dining

# NOODLE

**D** CONTAIN DAIRY **G** GLUTEN FREE

**N** CONTAIN NUT **V** VEGETARIAN

MILD

SPICY

## PLEASE SELECT A CHOICE OF MEAT

- TOFU OR VEGETABLE \$19.9
- CHICKEN BREAST \$19.9
- BEEF \$20.9
- FISH FILLET OR SQUID \$20.9
- GRILLED CHICKEN \$21.9
- CRISPY CHICKEN \$21.9
- PRAWN OR SEAFOOD \$24.9
- DUCK \$24.9

### SATAY NOODLE

HOKKIEN / FLAT NOODLE

**N**



### PAD THAI

**G** **N**



### PAD SEE EIW



### CHILLI BASIL NOODLE

HOKKIEN / FLAT NOODLE



### CHILLI JAM NOODLE

HOKKIEN / FLAT NOODLE

**N**





Bangkok Dining

# NOODLE & RICE

- D CONTAIN DAIRY
- G GLUTEN FREE
- N CONTAIN NUT
- V VEGETARIAN
- MILD
- SPICY

## PLEASE SELECT A CHOICE OF MEAT

- TOFU OR VEGETABLE \$19.9
- CHICKEN BREAST \$19.9
- BEEF \$20.9
- FISH FILLET OR SQUID \$20.9
- GRILLED CHICKEN \$21.9
- CRISPY CHICKEN \$21.9
- PRAWN OR SEAFOOD \$24.9
- DUCK \$24.9

### LAKSA



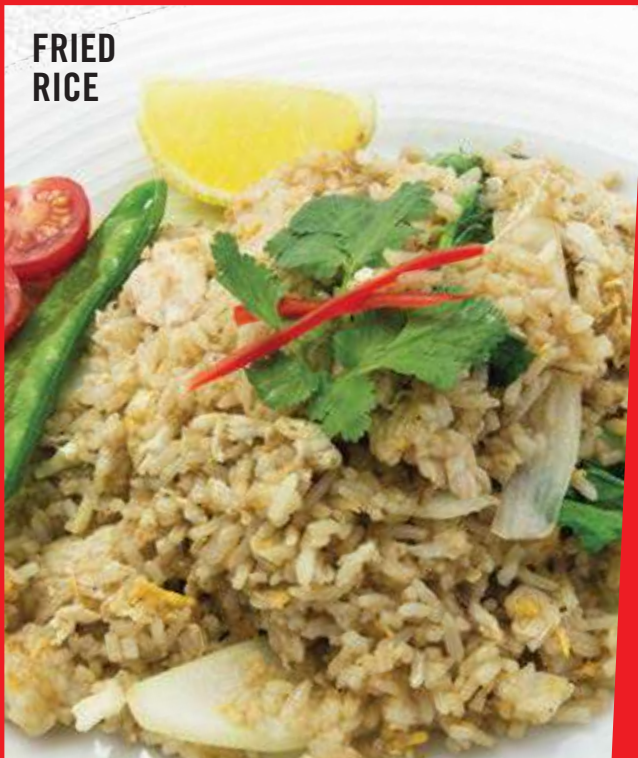
### SINGAPORE NOODLE



### TOM YUM FRIED RICE



### FRIED RICE



### CHILLI BASIL FRIED RICE





Bangkok Dining

# CRISPY CHICKEN LOVER

- D CONTAIN DAIRY
- G GLUTEN FREE
- N CONTAIN NUT
- V VEGAN
- MILD
- SPICY

**CRISPY CHICKEN CASHEW NUT**  
\$21.9

N



**CRISPY CHICKEN IN BASIL SAUCE**   
\$21.9



**SWEET & SOUR CRISPY CHICKEN**  
\$21.9



**CRISPY CHICKEN W/ SRIRACHA SAUCE**  
\$21.9



**HONEY CRISPY CHICKEN**  
\$21.9



**CRISPY CHICKEN GARLIC & BLACK PEPPER SAUCE**  
\$21.9





Bangkok Dining

# CRISPY CHICKEN LOVER

- D** CONTAIN DAIRY
- G** GLUTEN FREE
- N** CONTAIN NUT
- V** VEGETARIAN
- MILD
- SPICY



**CRISPY CHICKEN  
W/ PRIG KHING SAUCE**  
\$21.9



**MORNING GLORY W/  
CRISPY CHICKEN**  
\$21.9



**CHINESE BROCCOLI W/  
CRISPY CHICKEN**  
\$21.9

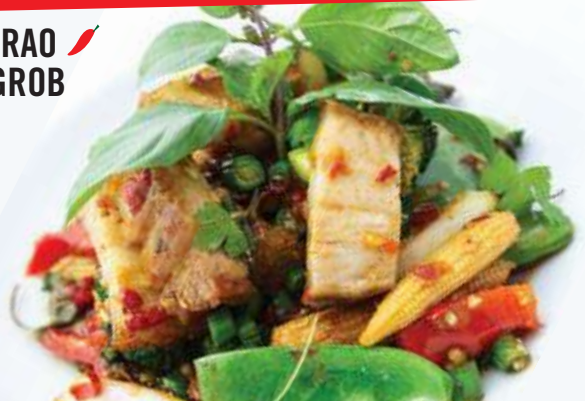


# PORK BELLY LOVER

**PAD PRIK KHING**   
**MOO GROB**  
\$22.9



**GRA PRAO**   
**MOO GROB**  
\$22.9



**PAK BOONG**   
**MOO GROB**  
\$22.9



**KA NA**   
**MOO GROB**  
\$22.9





Bangkok Dining

# STREET FAVOURITE

- D CONTAIN DAIRY
- G GLUTEN FREE
- N CONTAIN NUT
- V VEGETARIAN
- MILD
- SPICY

**GRA PRAO GAI**  
CHICKEN MINCED

**\$21.9**



**CHINESE BROCCOLI WITH MARINATED PORK**

**\$21.9**



**GARLIC CHICKEN**  
**\$21.9**



**GARLIC BEEF**  
**\$21.9**



**LARB GAI**  
CHICKEN MINCED

**\$21.9**



**GARLIC PRAWN**  
**\$24.9**



**SALT AND PEPPER SOFT SHELL CRAB WITH CHIP**  
**\$23.9**





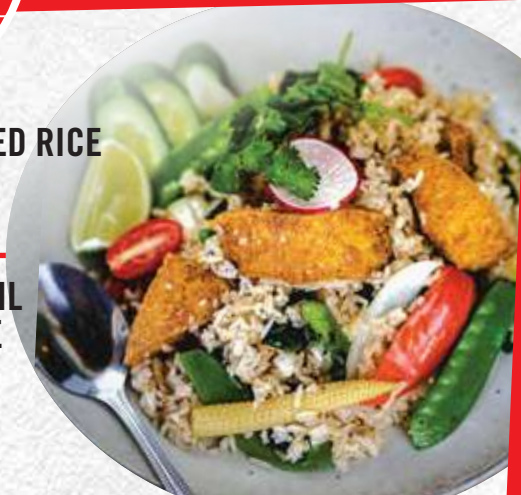
Bangkok Dining

# VEGAN

- D CONTAIN DAIRY
- G GLUTEN FREE
- N CONTAIN NUT
- V VEGAN
- MILD
- SPICY

● VEGAN FRIED RICE  
W/ TOFU  
\$19.9

● VEGAN BASIL  
FRIED RICE  
\$19.9



PAK BOONG  
FIRE DANG  
\$18.9



VEGAN CHILLI BASIL  
NOODLE TOFU  
\$19.9



KA NA FIRE DANG  
\$18.9



VEGAN CHILLI BASIL  
TOFU  
\$19.9



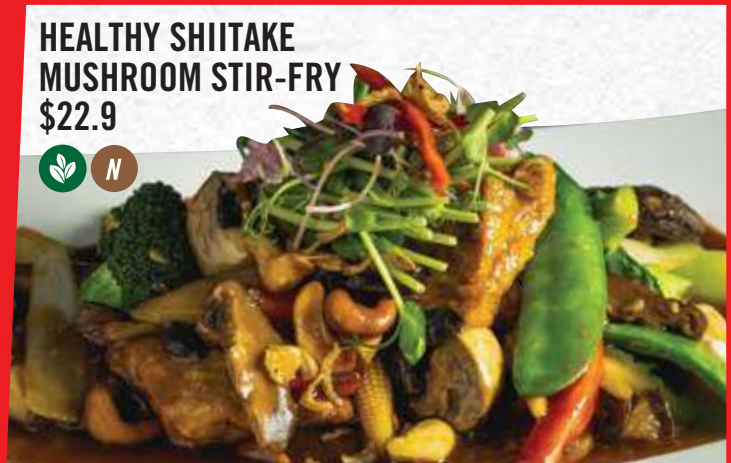
TOFU SALAD  
\$19.9



GREEN GARDEN  
ALL GREEN WITH TOFU  
\$19.9



HEALTHY SHIITAKE  
MUSHROOM STIR-FRY  
\$22.9





Bangkok Dining

# LITTLE B SPECIAL

- D CONTAIN DAIRY
- G GLUTEN FREE
- N CONTAIN NUT
- V VEGETARIAN
- MILD
- SPICY

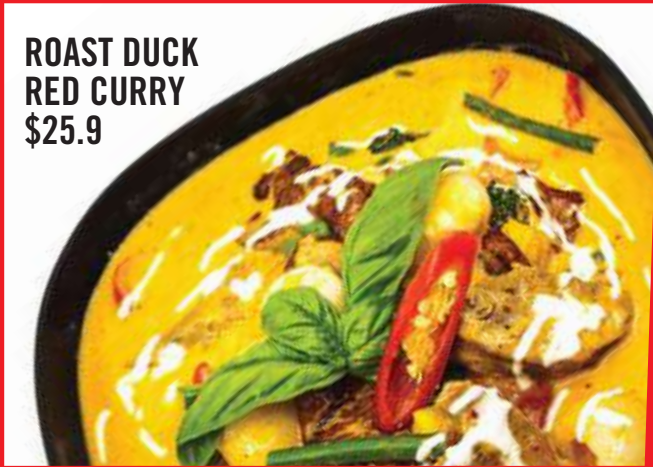
**PINEAPPLE FRIED RICE**  
\$23.9



**PARADISE CHICKEN**  
\$24.9



**ROAST DUCK  
RED CURRY**  
\$25.9



**BLACK PEPPER  
CRISPY SOFT SHELL CRABS**  
\$26.9



**PAD THAI W/  
SOFT SHELL  
CRAB**  
\$26.9

N



**PUNIM GARI**  
\$26.9



**SOFT SHELL CRAB  
IN LIME LEAF AND  
PEPPER CORN  
SAUCE**  
\$26.9



**SOFT SHELL CRAB  
IN TAMARIND  
SAUCE**  
\$26.9







Bangkok Dining

# LITTLE B SPECIAL

- D CONTAIN DAIRY
- G GLUTEN FREE
- N CONTAIN NUT
- V VEGETARIAN
- MILD
- SPICY

**STEAMED BARRAMUNDI IN CHILLI AND LIME SAUCE**  
\$37.9



**STEAMED BARRAMUNDI IN GINGER AND SESAME SAUCE**  
\$37.9



**SWEET CHILLI SAUCE BARRAMUNDI**  
\$37.9



**CHILLI & TAMARIND BARRAMUNDI**  
\$37.9





Bangkok Dining

# LITTLE B SPECIAL

**D** CONTAIN DAIRY **G** GLUTEN FREE

**N** CONTAIN NUT **V** VEGETARIAN

 MILD

 SPICY

**DEEP FRIED BARRAMUNDI  
IN FISH SAUCE**  
\$37.9



**DEEP FRIED BARRAMUNDI  
IN SWEET & SOUR SAUCE**  
\$37.9



**DEEP FRIED BARRAMUNDI  
IN GRA PRAO SAUCE**   
\$37.9





Bangkok Dining

# NOODLE BAR

D CONTAIN DAIRY    G GLUTEN FREE  
N CONTAIN NUT    V VEGETARIAN  
 MILD    SPICY

## CHOICE OF NOODLE ::

- THIN RICE NOODLE
- FLAT RICE NOODLE
- EGG NOODLE
- RICE VERMICELLI NOODLE

:: **SPICY LEVEL** ::  
 • NO CHILLI MILD  
 MEDIUM SPICY

**BRAISED CHICKEN WITH EGG NOODLE**  
 \$19.9



**NOODLE SOUP**  
 \$17.9



**NOODLE TOM YUM SOUP**  
 \$17.9

N



**NOODLE WITH WONTON SOUP**  
 \$17.9



**NOODLE WITH WONTON TOM YUM SOUP**  
 \$17.9

N



**YENTAFO**  
 \$17.9



**EGG NOODLE WITH WONTON AND BBQ PORK**  
 \$17.9



## :: DRY NOODLE ::

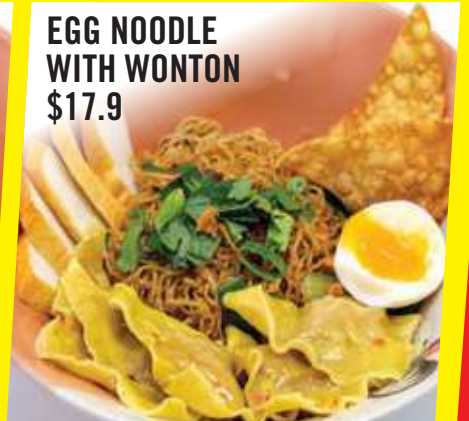
**EGG NOODLES**  
 \$17.9



**WONTON**  
 \$17.9



**EGG NOODLE WITH WONTON**  
 \$17.9





Bangkok Dining

# DESSERT

- D CONTAIN DAIRY
- G GLUTEN FREE
- N CONTAIN NUT
- V VEGETARIAN
- MILD
- SPICY



**COCONUT STICKY RICE WITH MANGO (SEASONAL)**  
\$13.9

+ADD COCONUT OR DURIAN ICE CREAM \$3

**BLACK STICKY RICE WITH TARO**  
\$10.9



**ICE CREAM COCONUT / DURIAN**  
\$7.9

G D N



**BLACK STICKY RICE W/ THAI CUSTARD**  
\$12.9



## KIDS MENU



**HOKKIEN NOODLES W/ SPRING ROLL**  
\$13.9



**PRAWN IN A BLANKET WITH CHIPS**  
\$15.9



**FRIED RICE W/ NET SPRING ROLL**  
\$13.9

## SIDES

- RICE \$3.5
- RICE W/ PEANUT SAUCE \$7.5
- STICKY RICE \$4
- ROTI \$3.5
- CHIP \$5